

# Enreach

$$E = \partial_e [ M_M \times V_c^2 ]$$

Holder ; Market Maker ; Risk Manager

Crowd sourced.  
Market agnostic.  
Easy to use.



---

# What is EnreachDAO?

## Future Proof DeFi Toolkit for Engineering Better Financial Outcomes

**EnreachDAO** is a community-governed DeFi platform that tokenises traditional financial assets or the utility of real world projects on ANY blockchain, simultaneously providing holders or market makers with the tools to hedge risk.

EnreachDAO crowdsources user experience to create a seamless and borderless web 3.0 interaction in DeFi.







# EnreachDAO Core Focus

---

- Core Focus 1 Interoperable and Programmable Liquidity
- Core Focus 2 Tokenising Real World Assets and Projects on ANY blockchain
- Core Focus 3 Development of DeFi Instruments
- Core Focus 4 Market Making and Arbitrage
- Core Focus 5 Unleashing DeFi upon the world

---

# How Does EnreachDAO Invest in DeFi?

## Grant Award Program Valuing Development and Contribution



***"Humans Are Tool Builders"*** - Steve Jobs 1996

In order to monetise DeFi one must invest in DeFi.

The "Grant Award Program" allows EnreachDAO to seed, advise, connect and collaborate with developers and communities in DeFi.

EnreachDAO will use the NRCH token and its monetary policy to carefully regulate the ecosystem to sustain the development of its core focus.

As Y Combinator accelerated growth for Stripe and Coinbase, EnreachDAO will accelerate growth for DeFi.

**Builders Build.**

## What is the EnreachDAO Ecosystem?

### Tokenomics Designed to Sustain Development and Build Value

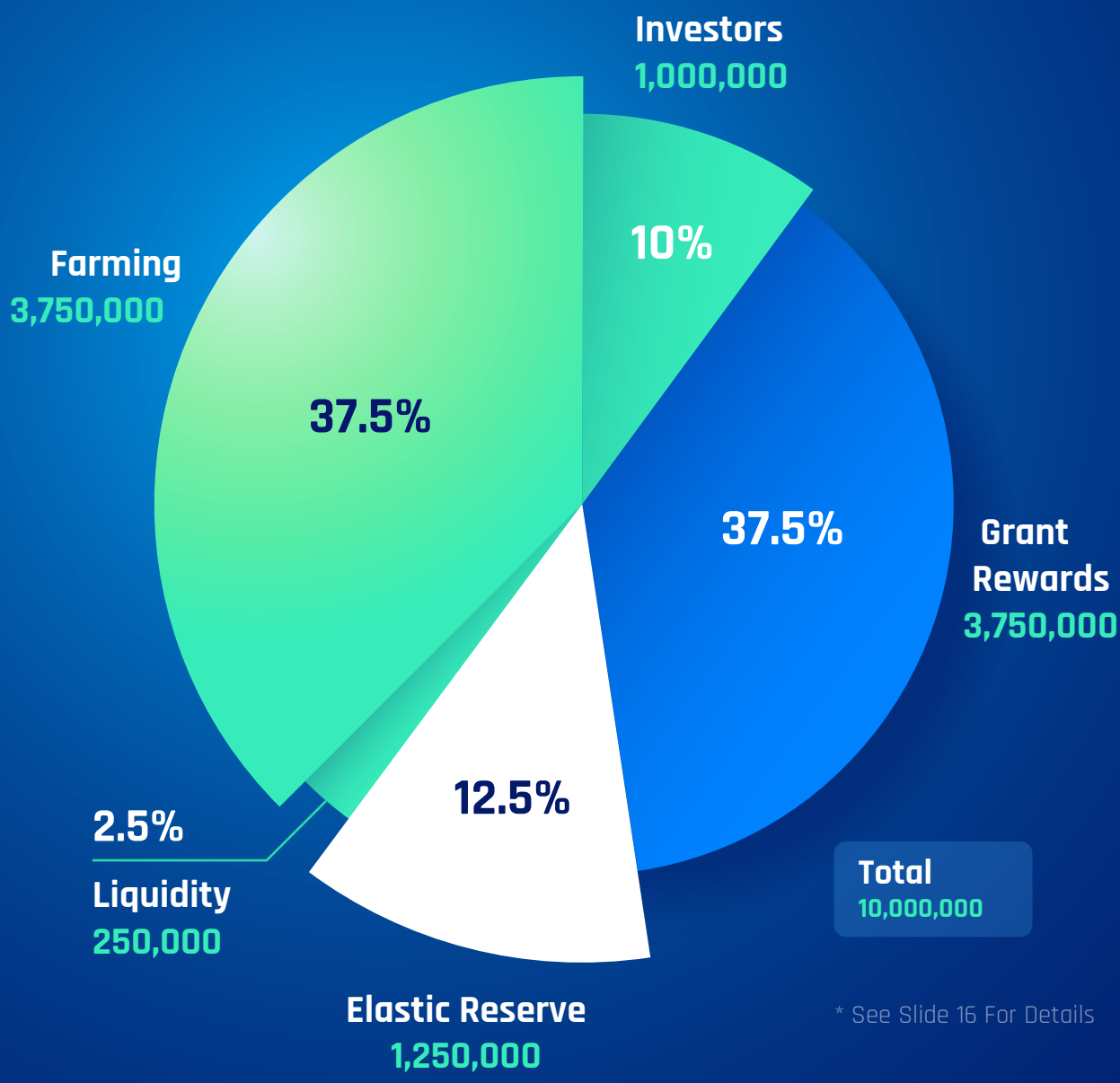


*"It's OK to have your eggs in one basket as long as you control what happens to that basket"* - Elon Musk 2013

EnreachDAO ecosystem aims to tackle increasingly complex markets and legal environments that require technological solutions for optimal results.

Presale tokenomics were designed with a fair 50:50 approach where half of NRCH supply was allocated to token holders and the remaining half of the supply is used to advance the ecosystem.

The utility of the NRCH token is linked to the Total Value Locked in the EnreachDAO contracts.



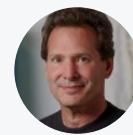
\* See Slide 16 For Details



# FIAT ON/OFF Ramping

**Core Focus 1** Interoperable and Programmable Liquidity

**Core Focus 2** Tokenising Real World Assets and Projects on ANY blockchain



***“The shift to digital forms of currencies is inevitable, bringing with it clear advantages in terms of financial inclusion and access; efficiency, speed and resilience of the payments system”*** - Dan Schulman; CEO

Regulated, cross chain FIAT on/off ramping gateways and payment services for consumers, high net worth individuals and venture capitalists represented by EnreachDAO Certified KYC NFTs:

KYC JB NFT + minimum 1,600 NRCH ➤ USD/EUR/GBP Consumer Banking and Debit Card

KYC OG NFT + minimum 16,000 NRCH ➤ USD/EUR/GBP HNW Banking and Debit Card

KYC VC NFT + minimum 80,000 NRCH ➤ USD/EUR/GBP FIAT GATEWAY

# Asset Backed Stable Coins

**Core Focus 1** Interoperable and Programmable Liquidity

**Core Focus 2** Tokenising Real World Assets and Projects on ANY blockchain



***"I think in a few years' time, we (Bank of England) will be heading toward some sort of digital currency"*** - Andrew Bailey; Governor of Bank of England 2020

EnreachDAO EVM compatible stable coins 1:1 pegged to denominated USD, EUR and GBP currencies backed by assets held in reserve. Acceptable asset reserves:

- FIAT (USD/EUR/GBP) held in EnreachDAO Treasury Accounts on Opt1mize Banking Infrastructure
- Receivables of Telecom Companies acquired through Opt1mize CommSettle Platform
- Cross Chain Liquidity held in custody by EnreachDAO Smart Contracts

# Real World Asset Index

**Core Focus 2** Tokenising Real World Assets and Projects on ANY blockchain



***“Advancements in technology will significantly change the trade finance market”*** - Michael Spiegel; Deutsche Bank 2017

The Real World Asset Index enables users to build markets pegged to projects and assets outside of the crypto markets. The Yaggr Multiverse will enable market making for stocks, commodities and startup projects from the real world tokenised by EnreachDAO.

Assetbased.Finance is an **Opt1mize Technologies** platform for the auction of trade receivables. Trade receivables are among a rising class of assets in demand from both retail and institutional investors. Assetbased.Finance enables EnreachDAO to tap into a market with annual revenues in excess of \$700B through the integration of nUSD and nEUR stable coins.





# Decentralised Borderless Money Markets

**Core Focus 4** Market Making and Arbitrage

**Core Focus 5** Unleashing DeFi upon the world



*"I'm not a business-man, I am a business...man!"* - Jay - Z

Yaggr is EnreachDAOs protocol for DeFi yield aggregation via a single decentralised application.

Deploy liquidity, harvest yield, govern strategies and manage risk.

Yaggr allows the crowd to be a VC, Market Maker and a Hedge Fund by automating yield maximisation and capital protection strategies on ANY market!

# Cross Chain Reserve and Yield Currencies

**Core Focus 1** Interoperable and Programmable Liquidity

**Core Focus 3** Development of DeFi Instruments



*"Because of you, I'm no longer an agent of this system. Because of you, I've changed. I'm unplugged. A new man, so to speak."* - Agent Smith, Matrix Reloaded

**MULTI** and **MACRO** are EVM compatible non-decimal currencies serving the Yaggr Multiverse of opportunities across DeFi on ANY chain.

MULTI will absorb liquidity of dying projects, unplug bag holders from their innovation-less investment and breathe a new lease of life into dormant liquidity.

MACRO is the cross chain yield currency for incentivising yield farming of specific markets and governance functions within the Multiverse on ANY chain.



# Cross Chain Bridge

**Core Focus 1** Interoperable and Programmable Liquidity

**Core Focus 3** Development of DeFi Instruments

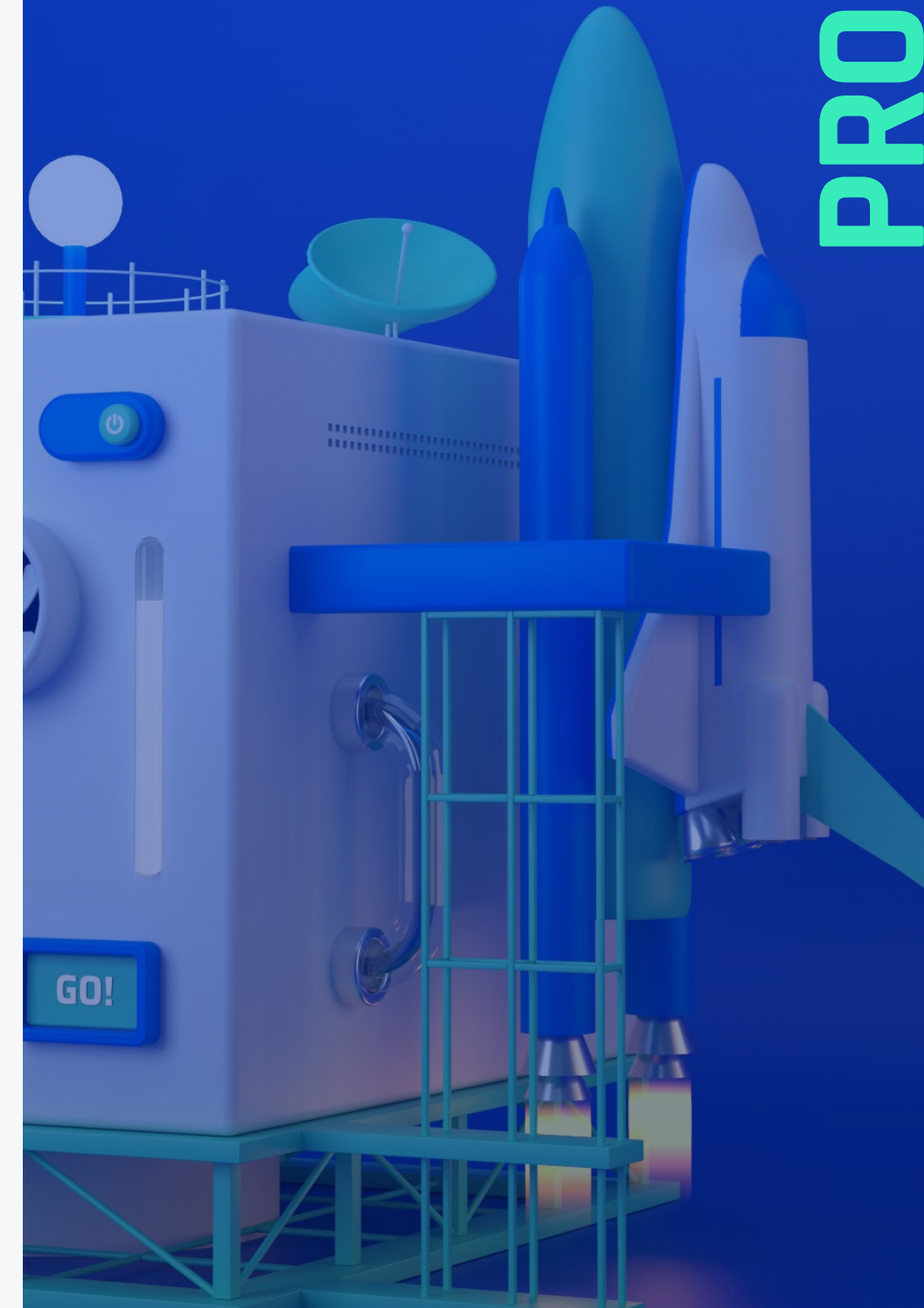


*“Men build too many walls and not enough bridges”* - Joseph Fort Newton

ChainSwitch is a cross chain bridge built specifically for the EnreachDAO ecosystem and **Multiverse** of assets.

ChainSwitch enables rebase and transactional fee distribution tokens to interoperate on ANY blockchain.

ChainSwitch is currently integrated between Ethereum and Binance Smart Chain, with upcoming integrations for the Polygon, Solana and Avalanche blockchains.





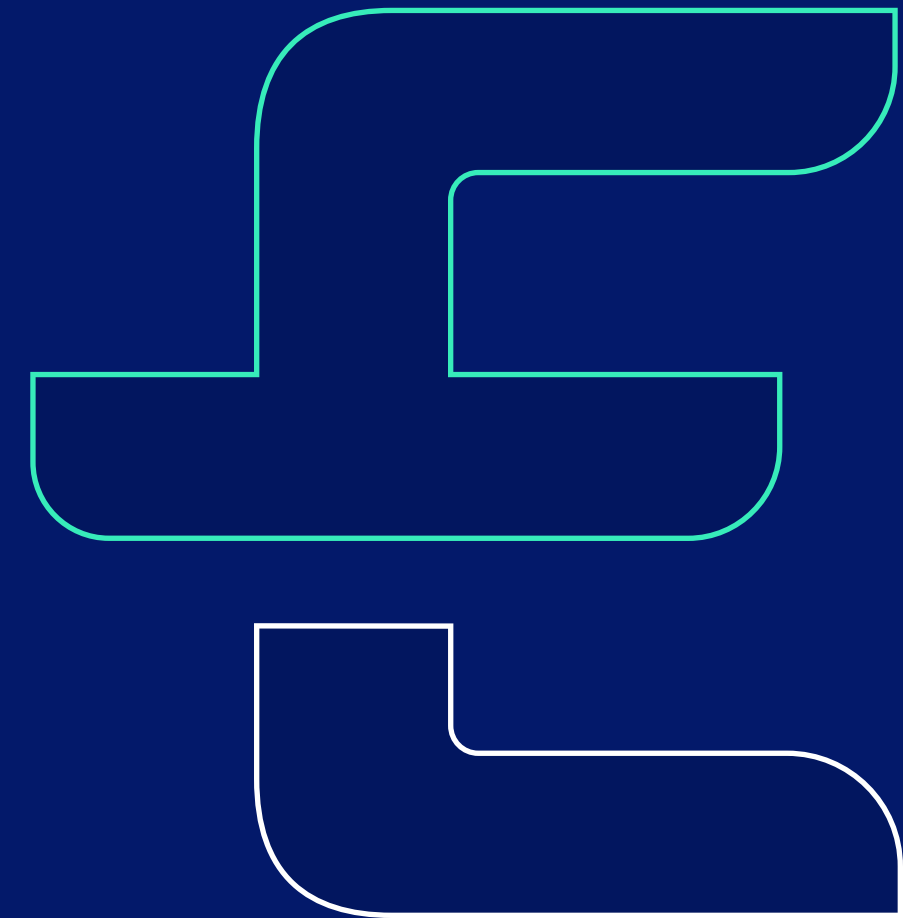


# Proof of Underwriting (PoU)

Consensus mechanism used to evaluate the risk of an activity or investment against the associated reward or price of such investment

PoU has been designed to price the risk against reward on activities or investments, so that risk can be priced out of any deal through acts of risk assignment, (re)insurance and/or the adoption of financial instruments and/or derivative products.

EnreachDAO is a governance community with a risk committee and governors responsible for investment management opportunities. EnreachDAO has been designed to operate similarly to a syndicate on the Lloyds of London Reinsurance Market, evaluating risk and executing investment or revenue strategies.



# Introducing EnreachDAO Risk Committee Governance

Developers, Thought Leaders, Regulatory Experts,  
Analysts, Rain Makers



*"The risk committee acts as dynamic decentralised governance acting almost as a human backstop to the code, since the NRCH token governance alone is unlikely to be able to create the trust between NRCH holders and EnreachDAO ecosystem participants to keep both sides honest without self interests overshadowing ecosystem integrity."*

- Kashaf Bashir 2020



Kashaf Bashir  
Founder Of Opt1mize



Abdelkader Allam  
Founder Of Opt1mize



Armandeep Mann  
Founder Of Genius Security



Brian Elders  
Founder Of SORS Digital Assets



Community Member  
To Be Appointed



@MacroCRG  
Founder of MacroUnpuzzled



Giovanni Tarone  
Telecoms Veteran, Former CEO Of Iris Wireless



Adam Wise  
Quantitative Investment Strategist



Pending  
Others To Be Appointed





# EnreachDAO Contributors (to date)

An amazing community bringing experience and innovation to help you Reach Enrichment



**Samuel Proctor**  
Genesis Block



**Andrew Broad**  
SORS Digital Assets



**Jayesh Kumar**  
Opt1mize



**Waqas Qamar**  
Opt1mize



**Jean Michel Hiver**  
Opt1mize



**Orlando Taddeo**  
Heritage Ventures



**Bulent Tuncel**  
Opt1mize



**@Chainlinkjunkie**  
Market Analyst, King of Plebs



**Laura Hanna**  
MLRO of Opt1mize



**Jitin Jain**  
Genesis Block





# Enreach Roadmap

---

Q2 2021	EnreachDAO Recruitment	Q3 2021	FIAT Ramping Regulatory Approval
Q2 2021	ChainSwitch ETH <> BSC	Q4 2021	Governance Platform
Q2 2021	Yaggr v1 BSC Liquidity Mining (NRCH-BNB LP)	Q4 2021	Stable Coin Launch
Q2 2021	ChainSwitch ETH/BSC <> MATIC	Q4 2021	Telecom Receivable Auctions
Q2 2021	Yaggr v1.1 MATIC Liquidity Mining (NRCH-ETH LP)	Q1 2022	ChainLink Integration
Q3 2021	Genesis Pool MULTI & MACRO Launch	Q1 2022	Digital Securities Listing (Tokenized Stocks)
Q3 2021	Yaggr v2 New Farms		
Q3 2021	ChainSwitch ETH/BSC/MATIC <> SOL		
Q3 2021	KYCNFT Launch		
Q3 2021	Tier1 CEX Listing with Tax Distribution		

# NRCH Governance

## Accountability, Transparency, Efficiency, Effectiveness, Responsiveness

The Risk Committee shall govern the Monetary Policy of EnreachDAO ecosystem, but also the Elastic Reserve and Treasury.

Until 2.5m NRCH tokens are in circulation (Pre-Sale plus 1.25m NRCH emitted from farming), governance decisions will be led by the Risk Committee.

GOVERNANCE TRIGGERS	SUPPLY MINIMUM	AMOUNT
Proposal to Risk Comittee	0.75%	75,000
Voting Proposal to Community	3.75%	375,000
Minimum Quorum	10.00%	1,000,000

The initial governance rules once 2.5m NRCH in circulation are:

- Governors are required to hold NRCH to vote in community governance
- Risk Committee assess and evaluate proposals, with proposals requiring minimum 0.75% NRCH Supply to be put forward
- Upon Risk Committee successful evaluation of proposal, minimum of 3.75% NRCH supply required to propose onchain vote for the Community
- Votes proposed to Community require minimum 10% NRCH supply as quorum



# NRCH Tokenomics

## A Guide on NRCH Usage, Utility and Value

NRCH, nUSD and nEUR, apply transactional taxes when the token is Bought (Buy Order) or Transferred (Send Action). Taxes are distributed to both Holders and Liquidity Providers.

NRCH token is required as a deposit for staking in the Yaggr Multiverse, subject to pre-defined proportions that will be governed by the Risk Committee, creating demand and scarcity.

TOKEN	TX TAX	HOLDER DIST	LP DIST
NRCH	2%	1%	1%
nUSD	0.30%	0.15%	0.15%
nEUR	0.30%	0.15%	0.15%

NRCH market capitalisation represents the “Net Worth” of the EnreachDAO ecosystem, and is proportionately linked to the Total Valued Locked in EnreachDAO contracts.

The Elastic Reserve is held to facilitate future Liquidity Generation Events to add depth to NRCH liquidity pools on ANY blockchain market.

After 25 days of inactivity, passive holders of NRCH token will be subject to a tax of 33.3333%. Any Buy Order or Send Action will reset the 25-day penalty timer. Staked NRCH tokens are NOT subject to any penalty.

Example: User buys 300 NRCH on Day 0, makes no further transactions in following 24 days, therefore Day 25, balance will be reduced to 200 NRCH.

**TVL number UP, NRCH price UP!**